



FOR LEASE

2770 - Ridgemoor Dr. SE

3,000 sq. ft.

Features:

- ◆ Modified Gross Lease
- ◆ New Parking Area
- ◆ New Handicap Parking
- ◆ Electric and Gas Extra
- ◆ Lower Level



Why locate here?

- ◆ Close to Woodland Mall Entrance
- ◆ Brand New Tile Floor Throughout

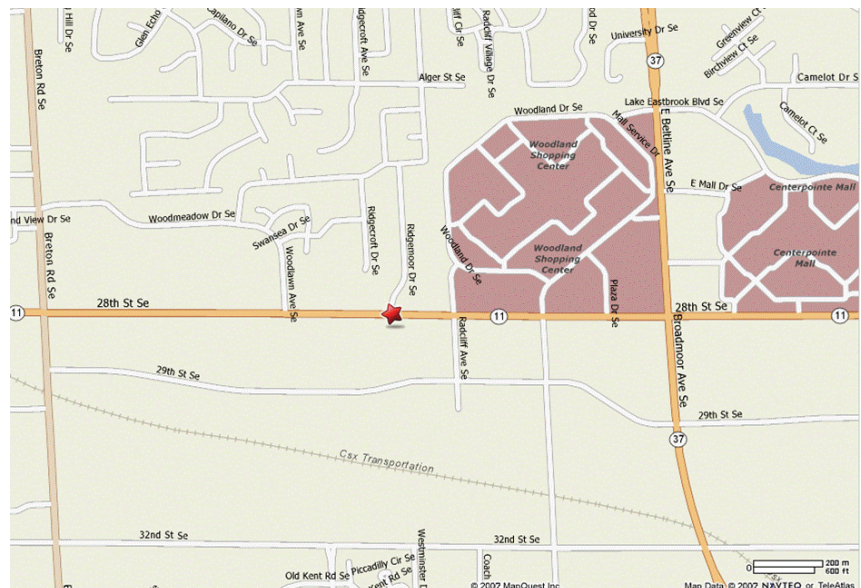
For complete information
Contact:

Dave Kwekel, CCIM

(616) 583-1200



COMMERCIAL
ALLIANCE
OF
REALTORS®



FOR LEASE

2770 Ridgemoor Dr. SE, Kentwood

SIZE: • 3,000 sq. ft.

LOCATION: Just west of Woodland Mall

GENERAL BUILDING FEATURES:

Construction:	Block
Heat:	Forced Air/Gas
Ceiling Height:	8' - 10'
Lighting:	Fluorescent
Roof:	Rubber
Sprinklered:	No
Parking:	Ample off-street
Year Built:	1972

GENERAL INTERIOR FEATURES:

Air Conditioning:	100%
Ceiling:	8' - 10'
Construction:	Drywall
Windows:	Thermal
Heat:	Forced Air/Gas
Restrooms:	Yes

UTILITIES: All municipal utilities available.

PERMANENT PARCEL #: 41-18-10-476-021

MUNICIPALITY: City of Kentwood

ZONING: Commercial 201

PRICE & TERMS: \$4.00 per square foot per year or \$1,000 per month with tenant paying all costs of insurance, utilities, and building maintenance along with annual cost of living adjustment in the rental.
Term: 12-36 mo. Lessor to approve use & credit.

POSSESSION: At Close

For More Information

Contact:

Dave Kwekel, CCIM
Dave Kwekel Development, LLC
7660 Clyde Park Ave. SW
Byron Center, Michigan 49315
Telephone: 616-583-1200
Fax: 616-583-1201

SEE OUR WEBSITE AT:

<http://www.dkwekel.com>